



South Central Coast Basin Control Council

July 24, 2025

Karl Tupper, Assistant / Incoming APCO



Air Pollution Control District
San Luis Obispo County



Outline

Motor Vehicle Coating



Asbestos Outreach



Patricia Atkins

Joint Landfill Inspections with CARB



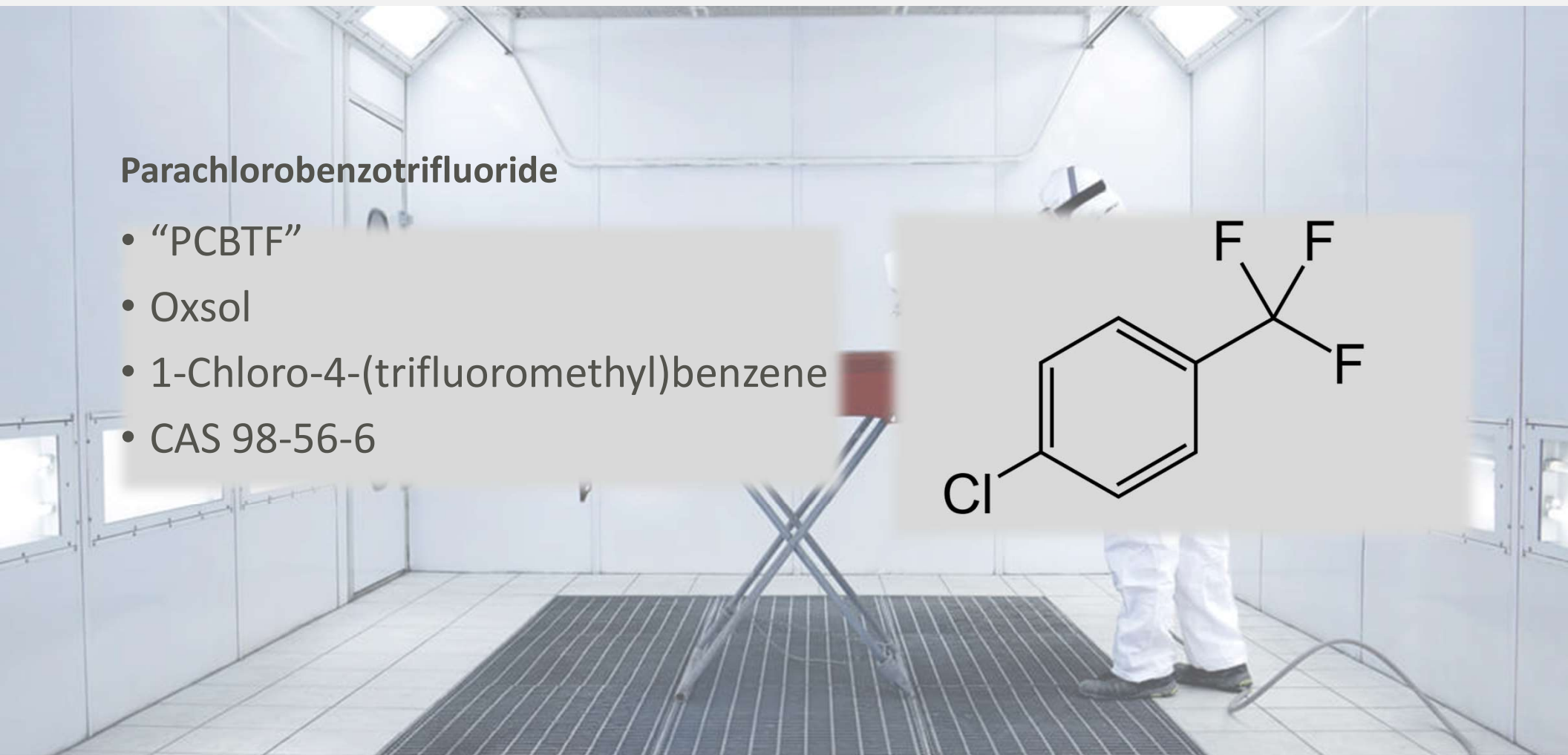
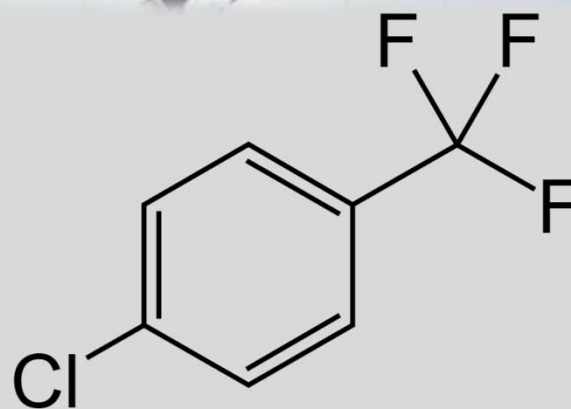
Motor Vehicle Coating



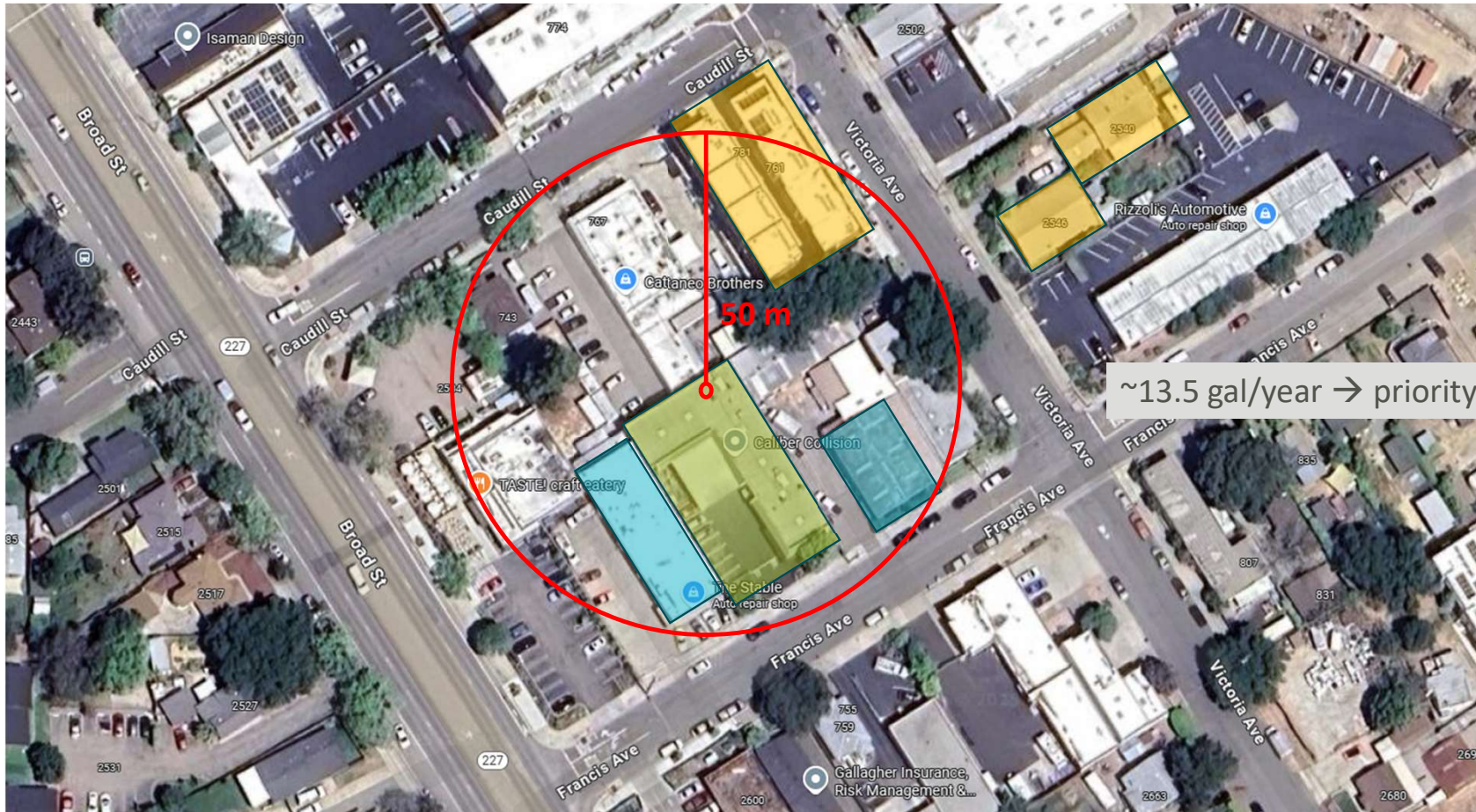
Motor Vehicle Coating

Parachlorobenzotrifluoride

- “PCBTF”
- Oxsol
- 1-Chloro-4-(trifluoromethyl)benzene
- CAS 98-56-6



Motor Vehicle Coating



Motor Vehicle Coating

South Coast AQMD Rule 1151

- Adopted Nov. 2024
- Bans PCBTF

Category	Prohibition Effective Date	Sell-through End Date	Use-through End Date
Color Coatings	November 1, 2025	November 1, 2026	January 1, 2028
All Other Coating Categories	May 1, 2025	May 1, 2026	July 1, 2027

SLO APCD Rule 423

- Aim to bring in Nov. 2025
- Modeled after Rule 1151
 - Push back (and possibly simplify) Sell-through and Use-by dates

Motor Vehicle Coating

South Coast AQMD Rule 1151

- Temporarily Raise VOC limits
- Estimated VOC emissions
 - “Current:” 2.5 tpd
 - Phase I: 4.8 tpd
 - Phase II: 0.2 tpd

SLO APCD Rule 423

- Adopt Rule 1151 limits and timeline

Coating Categories	Current Limits ⁽¹⁾		Phase I Limits Effective [Date of Rule Adoption]		Phase II Limits		
	g/L	lb/gal	g/L	lb/gal	g/L	lb/gal	Effective Date
Base Coatings							
Color Coating ⁽²⁾	420	3.5			250	2.1	1/1/2030
Tinted Mid-Coat	420	3.5	750	6.3	250	2.1	1/1/2030
Clear Coatings							
Gloss Clear Coating	250	2.1	520	4.3	250	2.1	1/1/2030
Matte Clear Coating	250	2.1	550	4.6			
Primers and Sealers							
Pretreatment Wash Primer	660	5.5	780	6.5	660	5.5	1/1/2028
Epoxy Primer	250	2.1	580	4.8	340	2.8	1/1/2028
Primer Sealer	250	2.1	550	4.6	250	2.1	1/1/2029
Primer Surfacer	250	2.1	580	4.8	250	2.1	1/1/2029
Other Coating Categories							
Adhesion Promoter	540	4.5	840	7.0	720	6.0	1/1/2028
Single-Stage Coating	340	2.8	600	5.0	340	2.8	1/1/2028
Temporary Protective Coating	60	0.5					
Truck Bed Liner Coating	310	2.6					
Underbody Coating	430	3.6					
Uniform Finishing Coating	540	4.5					
Any Other Coating Type	250	2.1					

Motor Vehicle Coating

Pending Applications

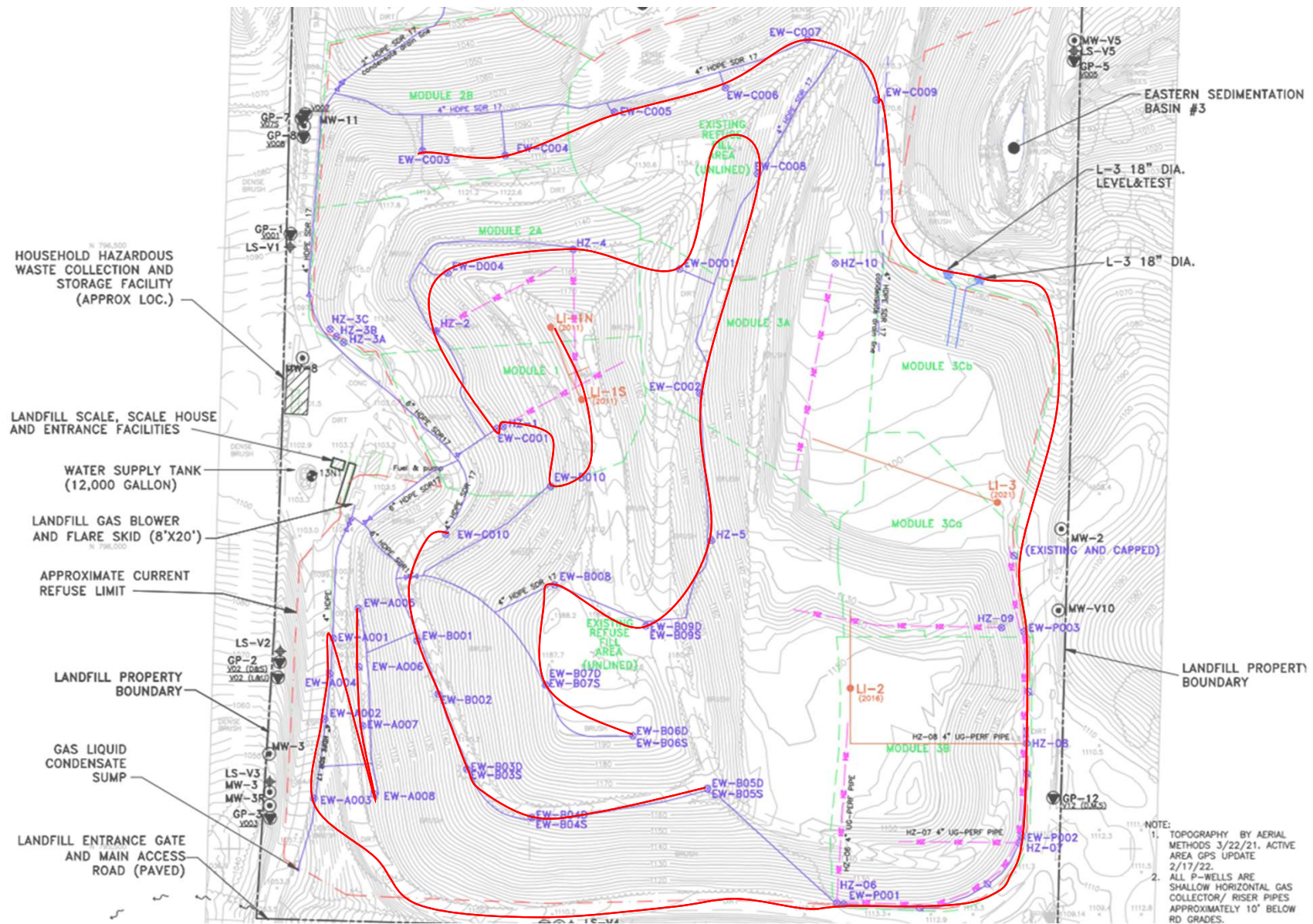
- Evaluate PCBTF risk assuming phase-out within 3 to 5 years
- Abbreviated project lifetime lowers calculated risk
 - Residential Risk: 4-year project is 40% of 70-year
 - Offsite Worker Risk: 4-year project is 16% of 25-year
- Add PCBTF limit if needed to reduce risk to < 10
- If rule is not changed, these new facilities will be brought into ATHS program with existing facilities.

Joint Landfill Inspections with CARB

- May: Short-Lived Climate Pollutant Enforcement Section reached out
 - Requested joint unannounced inspections
 - Paso Robles LF & Chicago Grade LF (Atascadero)
- CARB:
 - No specific concerns about these facilities
 - Goal: Mainly training/experience for their staff
- Conducted July 8 & 9
 - Focused on SEM (surface emissions monitoring)
 - APCD and CARB calibrated TVA's together prior to inspections

Joint Landfill Inspections with CARB





Joint Landfill Inspections with CARB

- May: Short-Lived Climate Pollutant Enforcement Section Reached out
 - Requested joint unannounced inspections
 - Paso Robles LF & Chicago Grade LF (Atascadero)
- CARB:
 - No specific concerns about these facilities
 - Goal: Mainly training/experience for their staff
- Conducted July 8 & 9
 - Focused on SEM (surface emissions monitoring)
 - APCD and CARB calibrated TVA's together prior to inspections
- Outcome:
 - Some SEM exceedances, but no exceedances at positive pressure points.
 - No NOVs. Situation was consistent recent APCD-only inspections.
 - Facilities were accommodating; CARB very transparent



Questions and Comments



Air Pollution Control District
San Luis Obispo County

